

GENERAL NOTES

THIS DRAWING TO BE READ IN CONJUNCTION WITH ARCHITECT'S DRAWINGS, CONSULTANT ENGINEERS' DRAWINGS AND SPECIFICATIONS & LANDSCAPE ARCHITECT'S DRAWINGS
REFER TO ARCHITECT'S SITE PLAN PL002 and PL003 FOR NORTH ORIENTATION.
LEVELS GIVEN ON HOUSE TYPE DRAWINGS ARE GIVEN TO A LOCAL ABSOLUTE ZERO LEVEL. FOR SPECIFIC LEVELS DEPENDING ON INDIVIDUAL UNIT LOCATION, REFER TO ARCHITECT'S CONTEXT SECTIONS AND ENGINEERS' DRAWINGS WHERE LEVELS ARE ALL GIVEN IN RELATION TO LAND SURVEYORS BENCHMARK BASED ON MAIN HEAD DATUM LEVEL.

REFER TO SITE LAYOUT PLAN FOR NORTH ORIENTATION
REFER TO CONSULTING ENGINEERS DRAWINGS FOR BLOCK LEVELS

NOTES ON FINISHES:

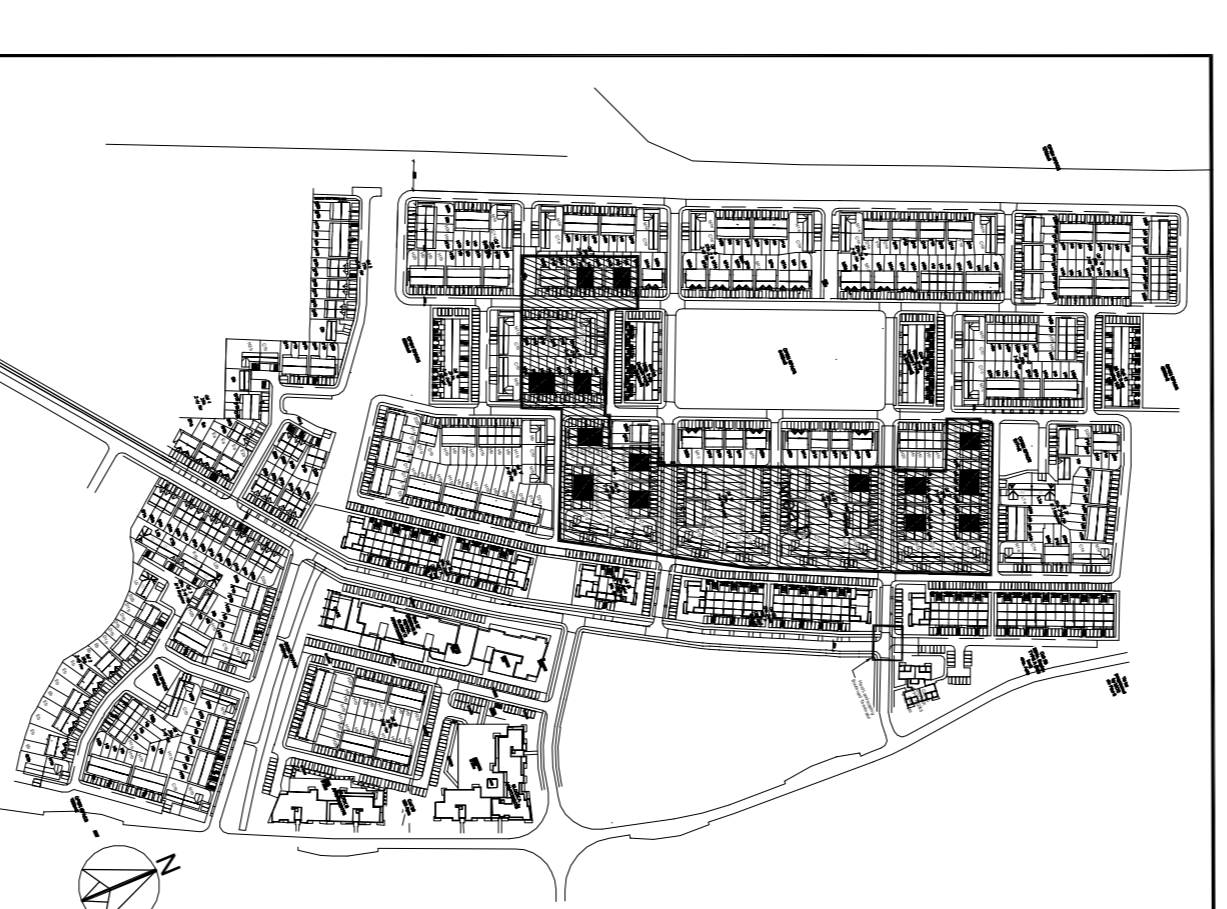
ROOF: TO BE FINISHED IN SLATE OR CONCRETE ROOF-TILES IN SELECTED COLOUR OR SIMILAR APPROVED.
WALLS: SELECTED CLAY BRICKWORK WHERE INDICATED OTHERWISE RENDER OR DRY-DASH TO CONCEALED SIDE GABLES.

JANERY:

ALL WINDOWS AND DOORS, FRAMES AND LEAVES TO BE ALUMINIUM POWDER-COATED TO APPROVED COLOUR OR UPVC OR PAINTED TIMBER TO APPROVED COLOUR OR PVC GLAZING WHERE INDICATED SENSITIVE WINDOWS.

RAINWATER GOODS: GUTTERS, DOWNPIPES, AND FININGS TO BE UPVC OR ALUMINIUM POWDER COATED TO SELECTED COLOUR TO MATCH ROOF SLATES

* SOLAR PANELS:
INDICATIVE SOLAR PANEL POSITION, FINAL SOLAR PANEL POSITIVE OR NEGATIVE ORIENTATION, THE SOLAR PANEL RENEWABLE ENERGY REQUIREMENTS OF BUILDING REG PART 1. SOLAR PANELS MAY BE OMITTED IN FAVOUR OF ALTERNATIVE RENEWABLE ENERGY SOURCE.



KEY PLAN - NTS

Character Area D

Hd	HOUSE TYPE Hd	Mid Terrace
	2 STOREY	114.4 m ² / 1,231 ft ²
	3 BED	No. of Units: 32

GENERAL NOTES

THIS DRAWING TO BE READ IN CONJUNCTION WITH ARCHITECT'S DRAWINGS, CONSULTANT ENGINEERS' DRAWINGS AND SPECIFICATIONS & LANDSCAPE ARCHITECT'S DRAWINGS
REFER TO ARCHITECT'S SITE PLAN PL002 and PL003 FOR NORTH ORIENTATION.
LEVELS GIVEN ON HOUSE TYPE DRAWINGS ARE GIVEN TO A LOCAL ABSOLUTE ZERO LEVEL. FOR SPECIFIC LEVELS DEPENDING ON INDIVIDUAL UNIT LOCATION, REFER TO ARCHITECT'S CONTEXT SECTIONS AND ENGINEERS' DRAWINGS WHERE LEVELS ARE ALL GIVEN IN RELATION TO LAND SURVEYORS BENCHMARK BASED ON MAIN HEAD DATUM LEVEL.

REFER TO SITE LAYOUT PLAN FOR NORTH ORIENTATION
REFER TO CONSULTING ENGINEERS DRAWINGS FOR BLOCK LEVELS

NOTES ON FINISHES:

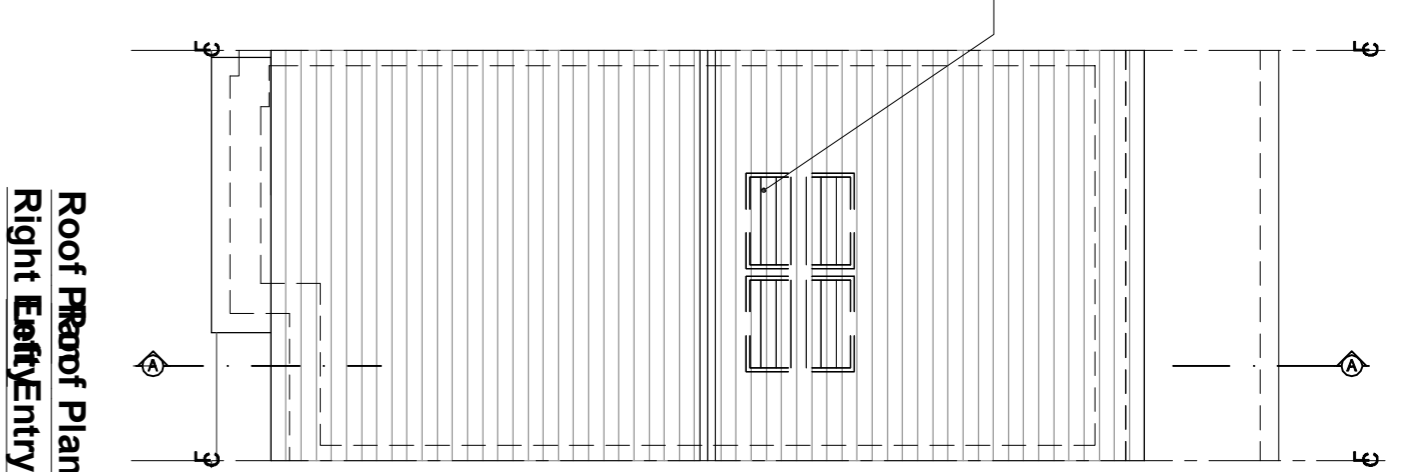
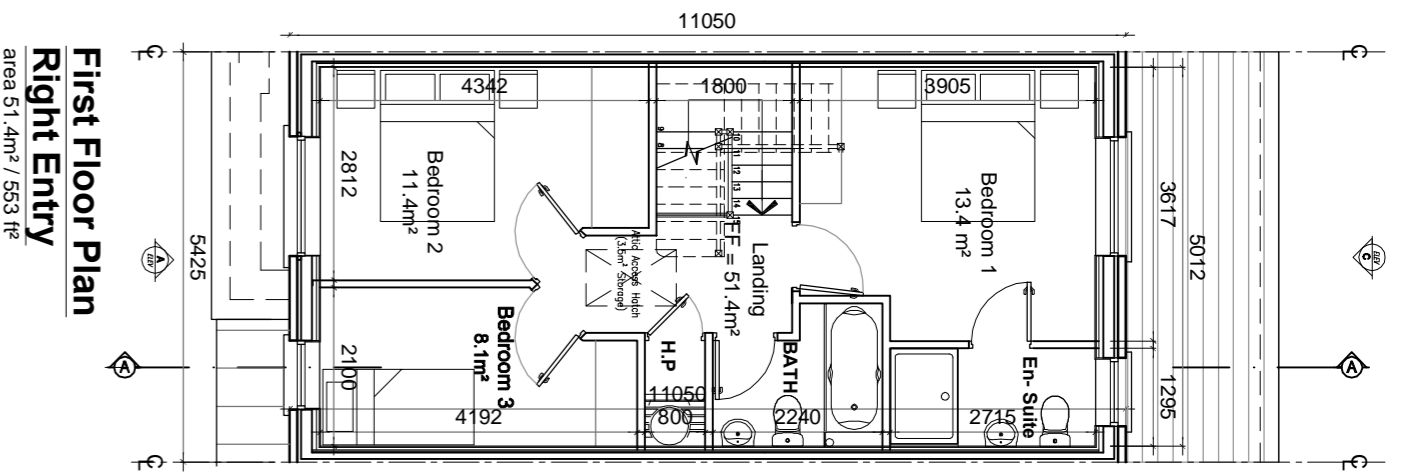
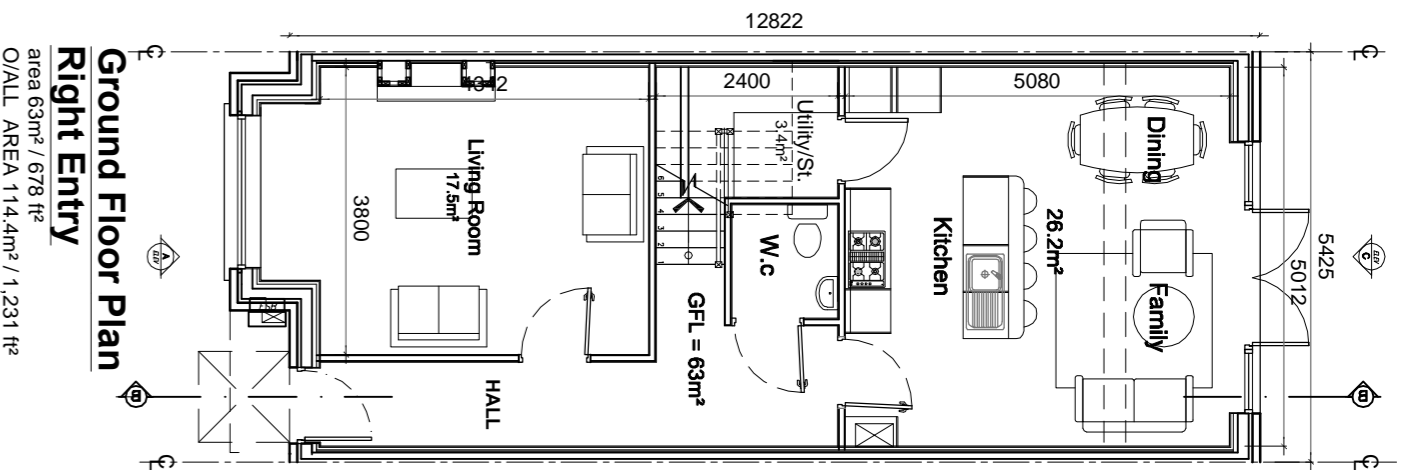
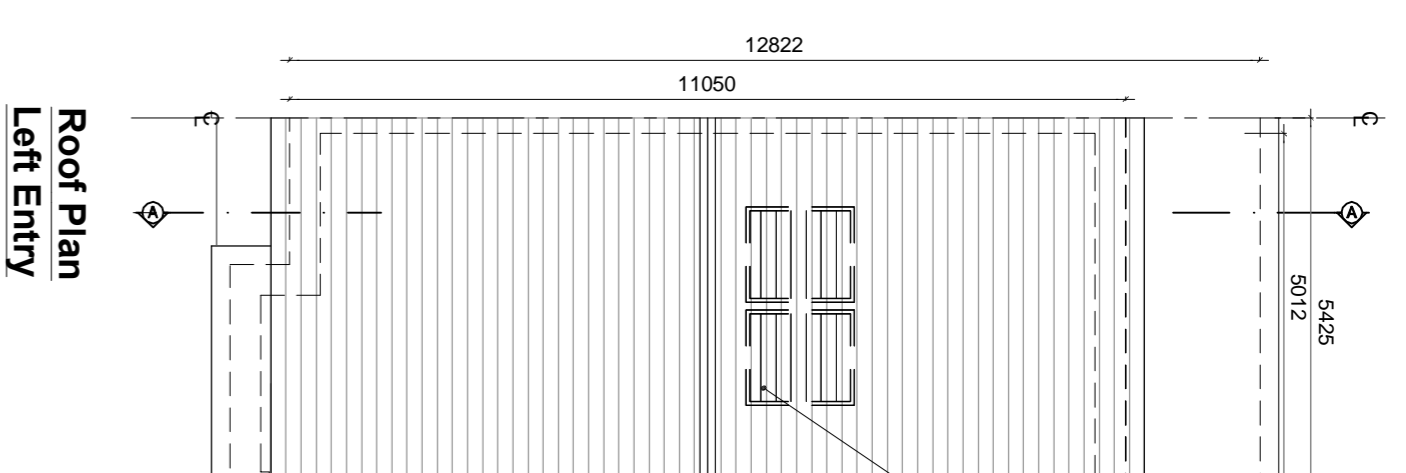
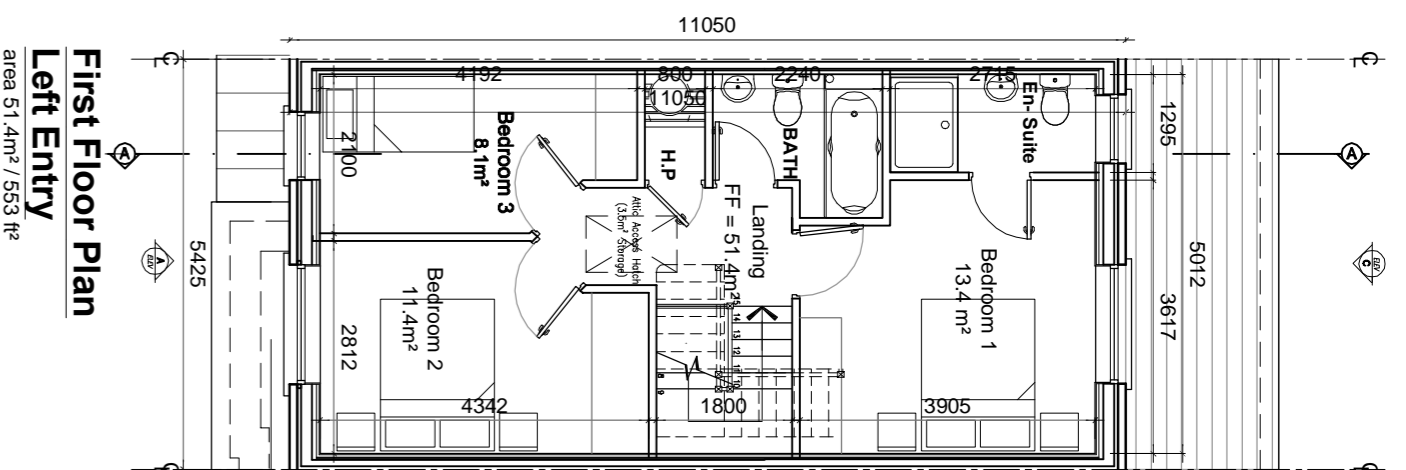
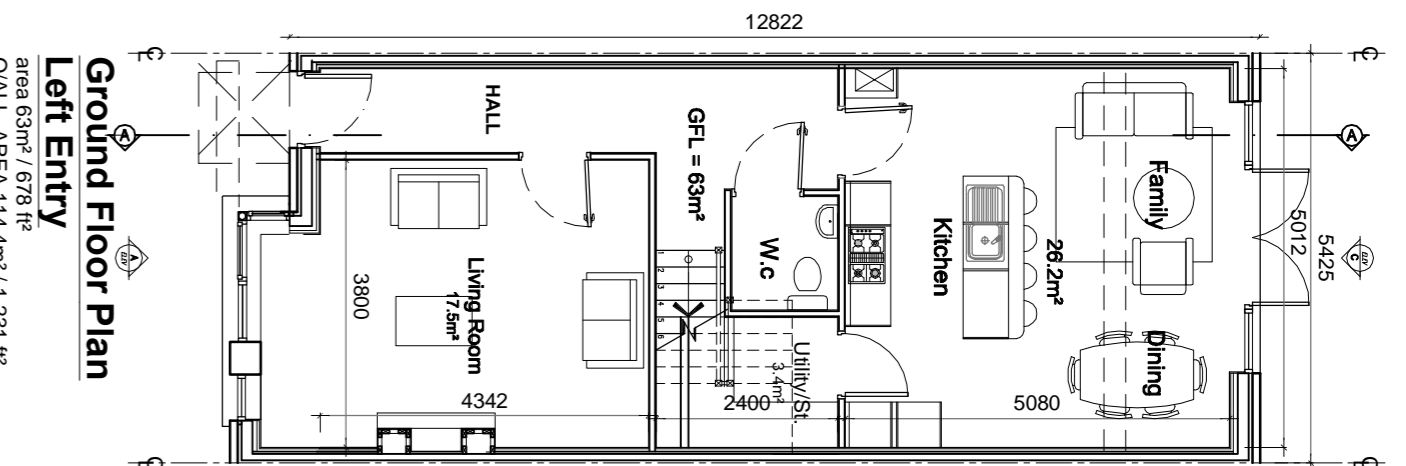
ROOF: TO BE FINISHED IN SLATE OR CONCRETE ROOF-TILES IN SELECTED COLOUR OR SIMILAR APPROVED.
WALLS: SELECTED CLAY BRICKWORK WHERE INDICATED OTHERWISE RENDER OR DRY-DASH TO CONCEALED SIDE GABLES.

JANERY:

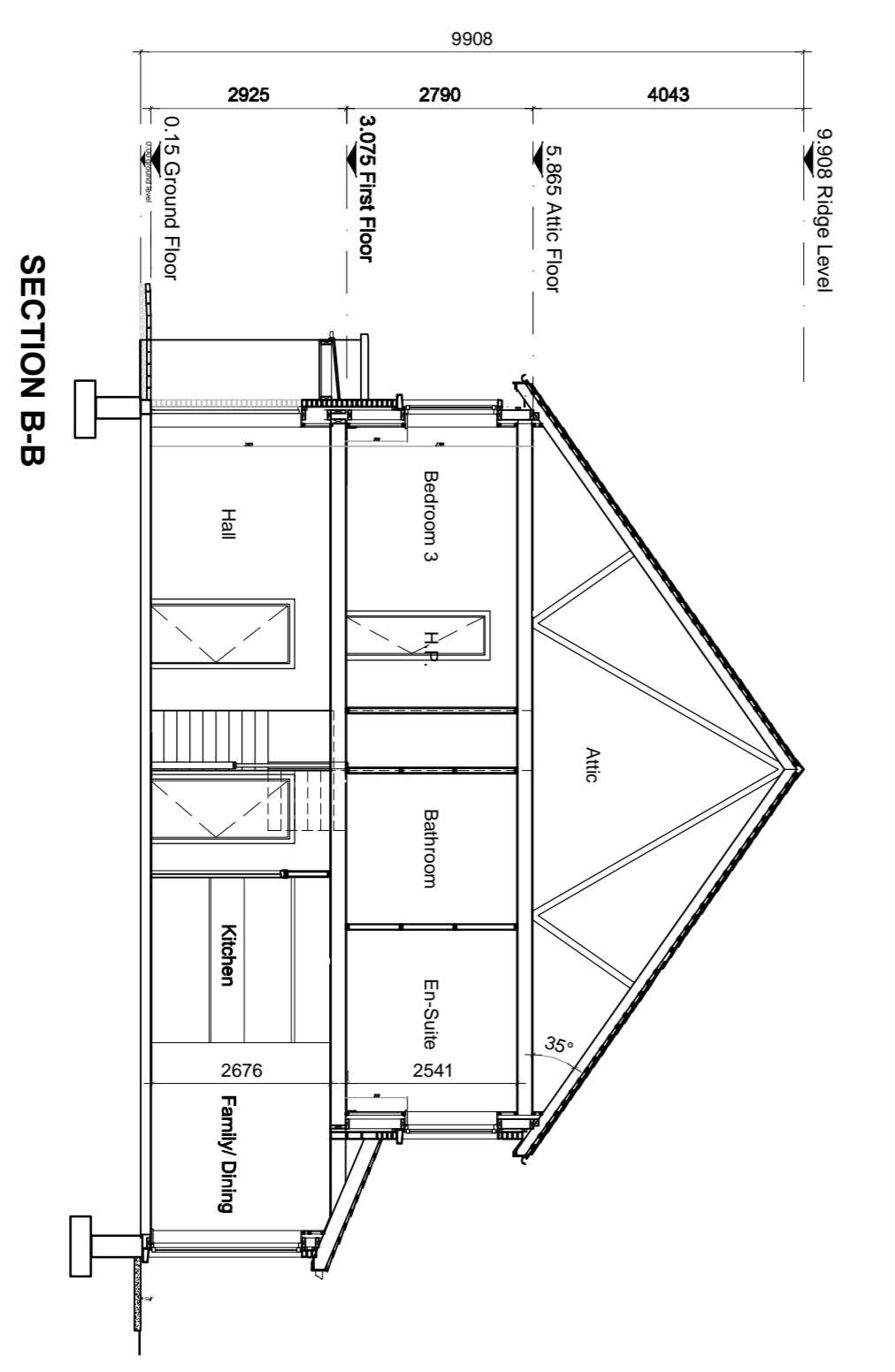
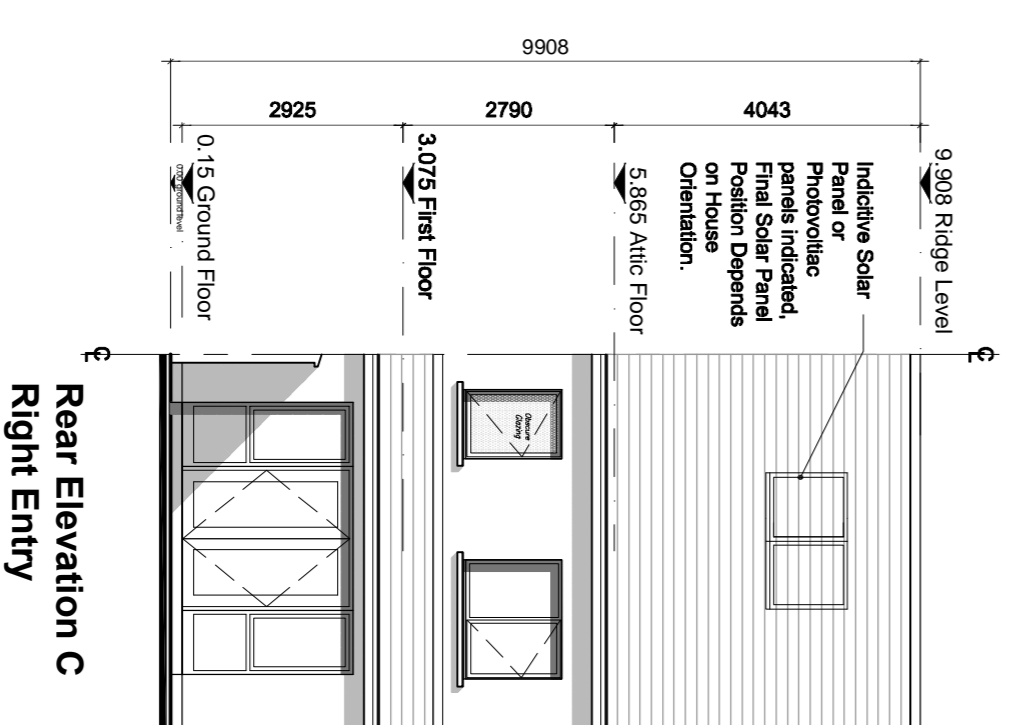
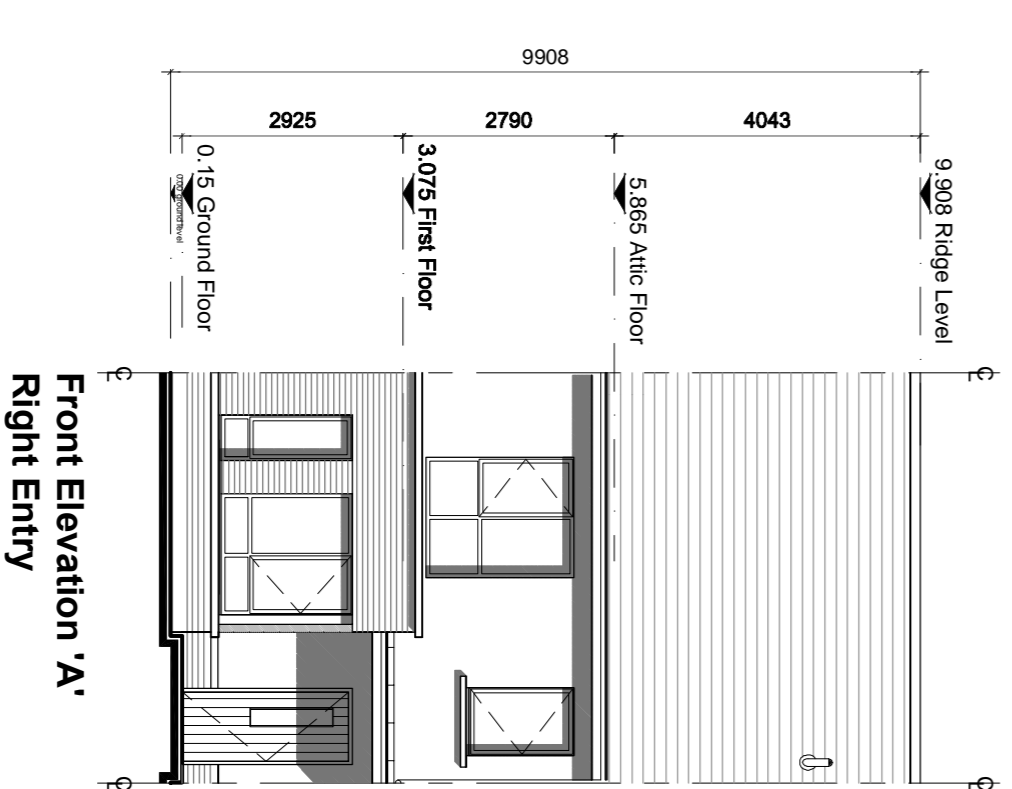
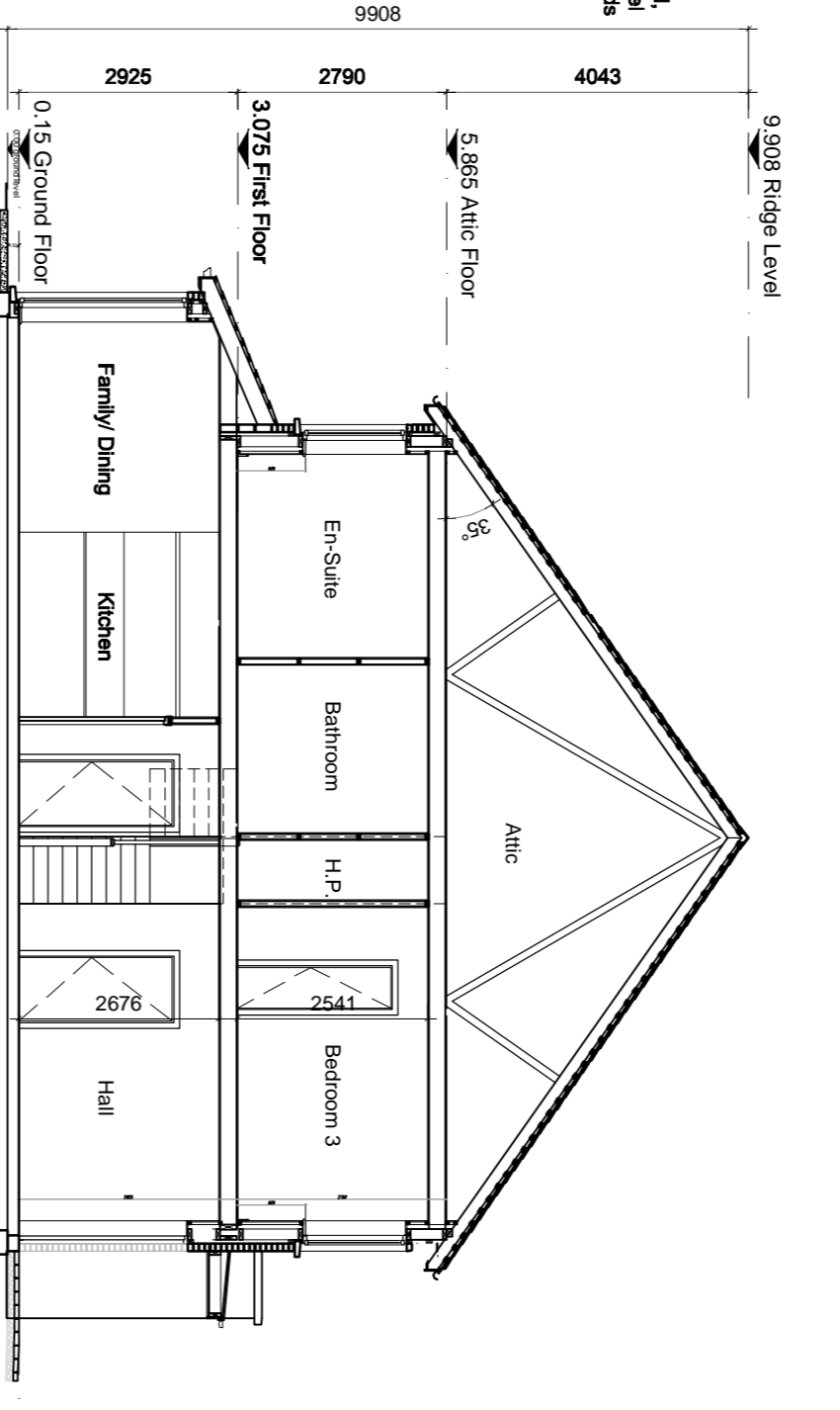
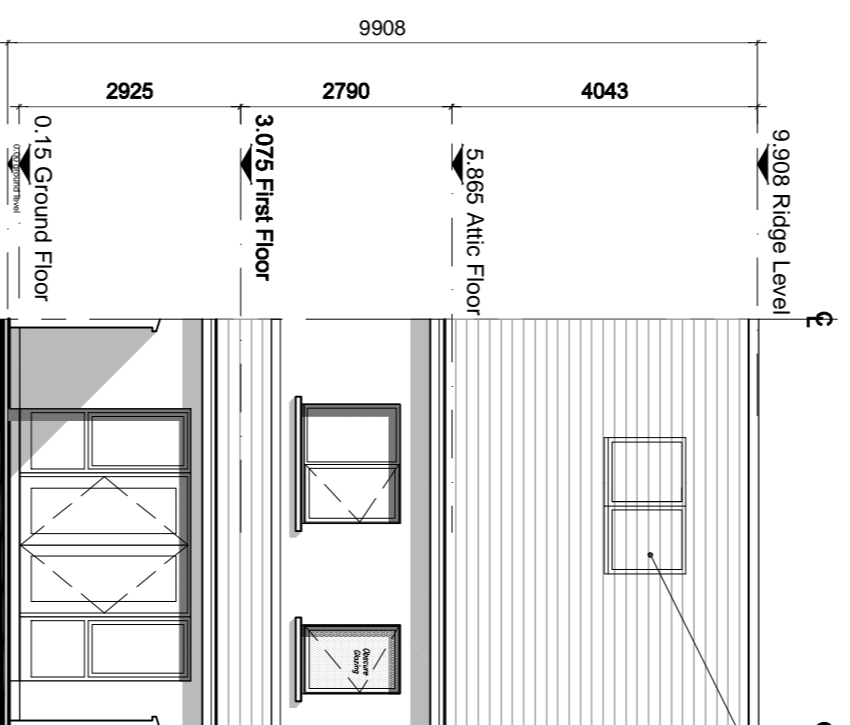
ALL WINDOWS AND DOORS, FRAMES AND LEAVES TO BE ALUMINIUM POWDER-COATED TO APPROVED COLOUR OR UPVC OR PAINTED TIMBER TO APPROVED COLOUR OR PVC GLAZING WHERE INDICATED SENSITIVE WINDOWS.

RAINWATER GOODS: GUTTERS, DOWNPIPES, AND FININGS TO BE UPVC OR ALUMINIUM POWDER COATED TO SELECTED COLOUR TO MATCH ROOF SLATES

* SOLAR PANELS:
INDICATIVE SOLAR PANEL POSITION, FINAL SOLAR PANEL POSITIVE OR NEGATIVE ORIENTATION, THE SOLAR PANEL RENEWABLE ENERGY REQUIREMENTS OF BUILDING REG PART 1. SOLAR PANELS MAY BE OMITTED IN FAVOUR OF ALTERNATIVE RENEWABLE ENERGY SOURCE.



INDICATIVE SOLAR PANEL OR PHOTOVOLTAIC PANEL POSITION. Final Solar Panel Position Depends on House Orientation.



NOTES:

DO NOT SCALE FROM THIS DRAWING. DIMENSIONS FIGURED DIMENSIONS ONLY. ARCHITECT TO BE NOTIFIED OF ALL DISCREPANCIES.

REVISIONS		NO.
DATE	DESCRIPTION	

PROJECT TITLE: Dunshaughlin East SHD
DRAWING TITLE: House Type Hd - Left and Right Entry Plans, Elevations, & Section
SCALE: 1:100 @ A1
DATE: Dec 18
SPRINGER: DB
DRAWING NO.: 16028-1SHD138

